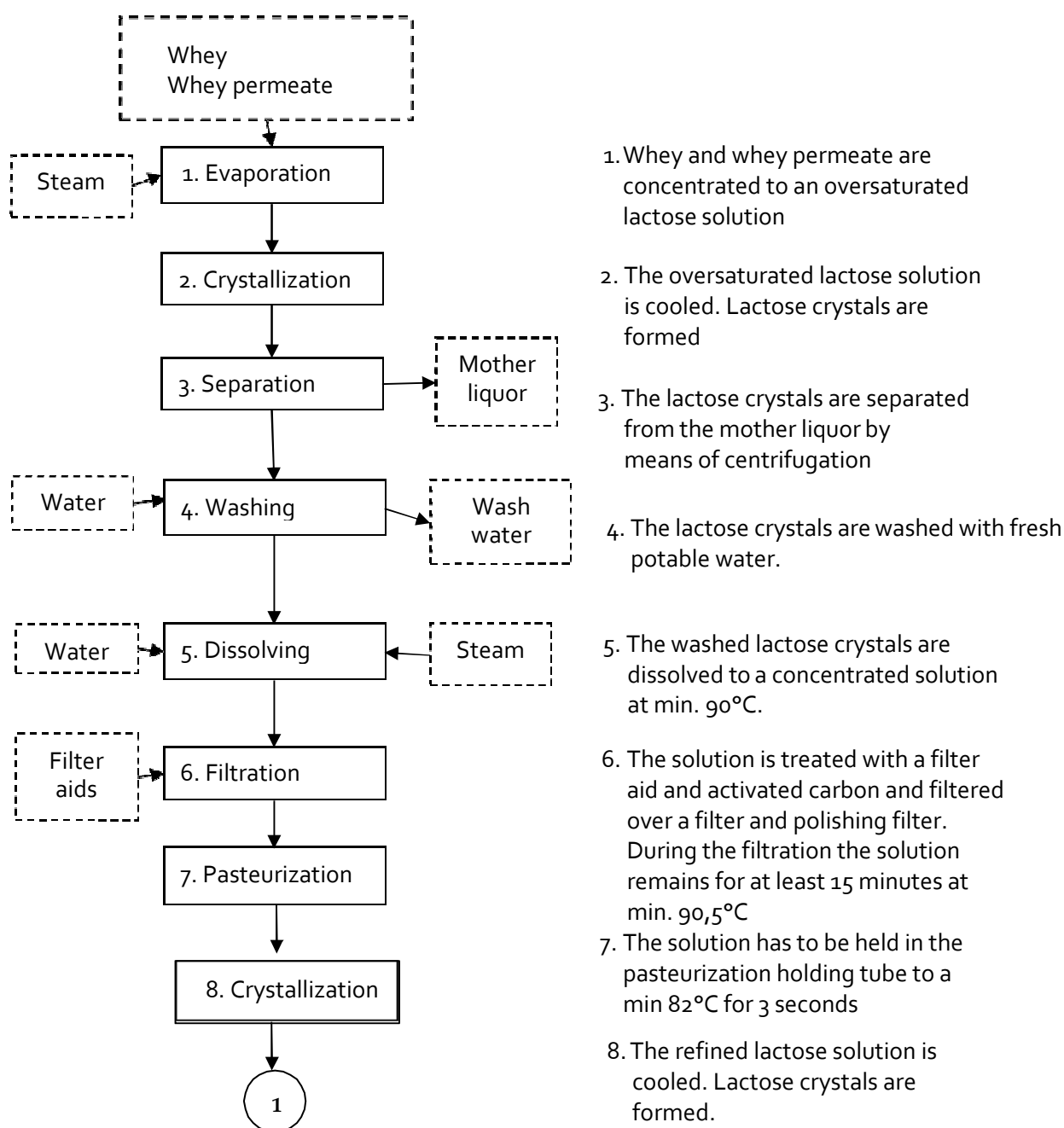




# Process Flow Sheet

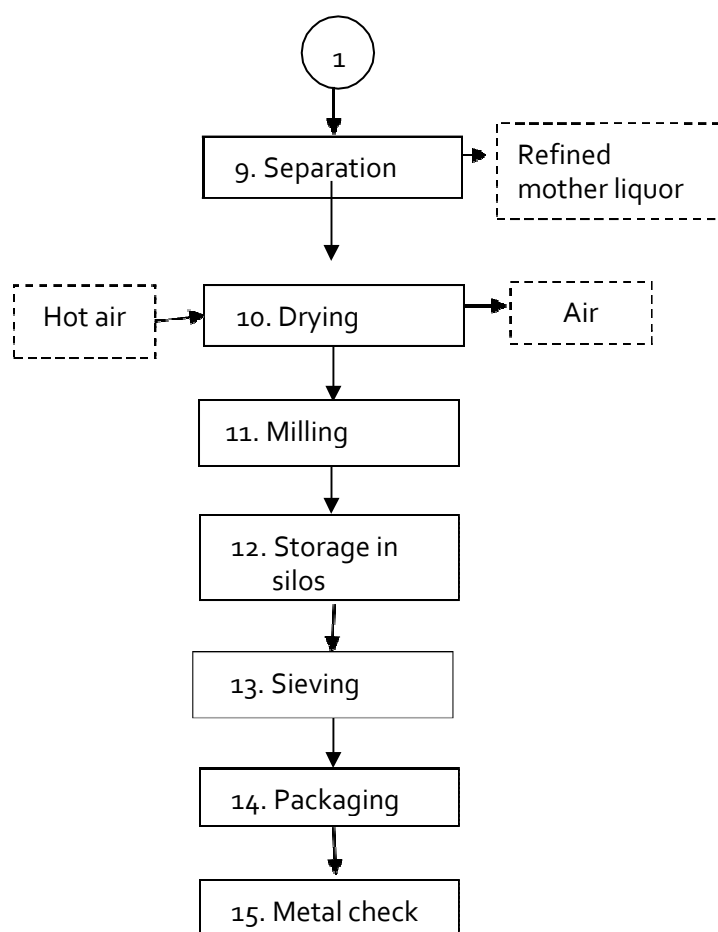
Product group: Lactose  
 Brand name: Pharmatose® 200M  
 manufactured in NZ  
 Article code: 743728/ 29/31/32  
 Product description: Lactose monohydrate  
 Document No.: PD-0249 Page 1 of 2





# Process Flow Sheet

Product group: Lactose  
 Brand name: Pharmatose® 200M  
 manufactured in NZ  
 Article code: 743728/ 29/31/32  
 Product description: Lactose monohydrate  
 Document No.: PD-0249 Page 2 of 2



9. The refined lactose crystals are separated from the refined mother liquor
10. The refined lactose crystals are dried on a fluid bed dryer
11. The dried lactose is milled to the desired mesh size and passes a 500 µm screen.
12. Before storage in silos the lactose crystals pass a magnet
13. Just before packaging the product passes a 2000 µm screen and a magnet.
14. The product is packed in a multilayer paper bag with EVOH/polyethylene inner bag or big bags. Every packing is identified with product name, batch number, production date and expiry date.
15. Before palletizing every 25 kg paper bag is checked with a metal detector. Sensitivity of the metal detector: Ferrous 1,5 mm, non-ferrous 2,0 mm.

This statement substitutes all previous versions issued for the brand names mentioned above. We trust this information, which is made up to the best of our knowledge, will be helpful to you

**Name** : Teun Heijnen  
**Job title** : Operations & Supply Chain Director  
**Signature** :

This document is controlled by a validated, electronic system and is valid without signature.  
 The above facsimile signature is only for display.