

Oral Solid Dose

SuperTab[®] 22AN

Anhydrous lactose with
improved flowability



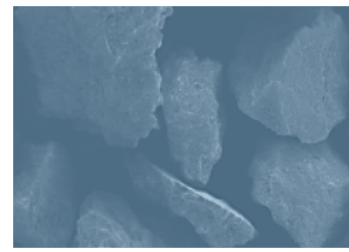
SuperTab[®] and Lactopress[®] are DFE Pharma's brand names for direct compression lactose. **SuperTab[®] 22AN** is an anhydrous lactose with reduced fines, increasing its flowability. The characteristic structure contains clusters of microcrystals of predominately anhydrous β -lactose resulting in a low moisture content. SuperTab[®] 22AN is developed for high dose applications that require anhydrous lactose in combination with good flow. This type of lactose is typically used for roller compaction and direct compression.

ASK AN EXPERT
dfepharma.com/productfinder



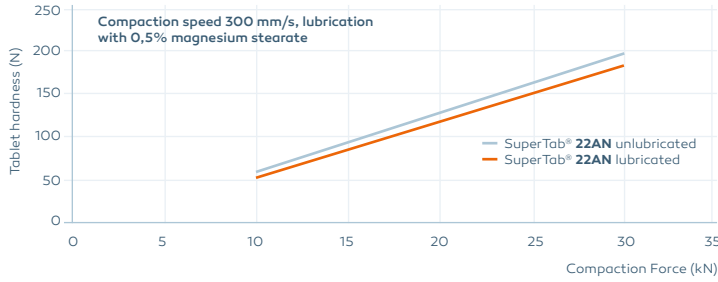
SuperTab® 22AN

Benefits



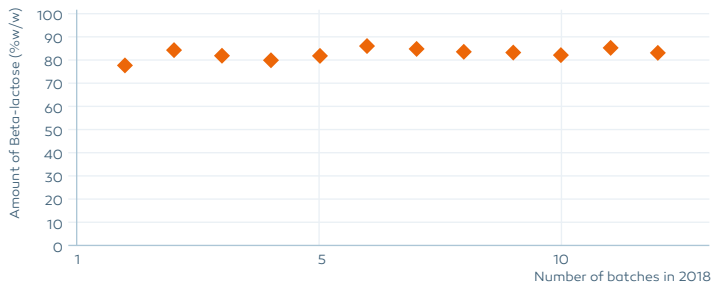
Low sensitivity to speed of compaction

SuperTab® 22AN shows a low lubricant sensitivity. <20% Reduction in tablet hardness from 3mm/s to 300 mm/s.



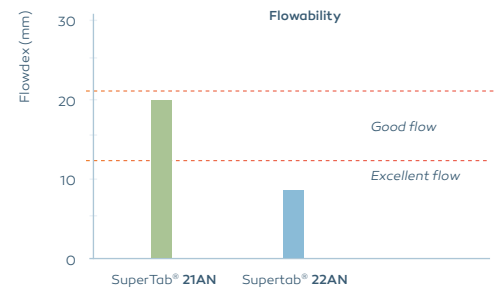
Suitable for moisture sensitive high dose API

The unique, low levels of crystalline water makes the use of SuperTab® 22AN with PAT technologies efficient. Typically SuperTab® 22AN contains about 80% of the β-isomer and no monohydrate lactose is present.



Part of a portfolio offering enhanced flowability

DFE Pharma offers more anhydrous grades with different particle sizes and morphology to enable a best fit with your formulation requirements. SuperTab® 22AN as part of the anhydrous portfolio provides improved flowability due to the reduction of fines.



Flow SuperTab® 22AN

Carr's index	15%
HR	1.17

Facts

Typical product data

Complies with Ph. Eur., USP-NF, JP
Kosher & Halal certified

Particle size distribution

Method: by Airjet sieve

Sieve %w/w < 74 µm	≤ 7	Poured density	0.68 g/ml
Sieve %w/w < 150 µm	25 - 50	Tapped density	0.80 g/ml
Sieve %w/w < 250 µm	≥ 60	Karl Fischer (moisture)	< 0.5% w/w

Packaging

	Drum
Capacity	50 kg
Shelf life	2 years

In pursuit of excipient excellence