

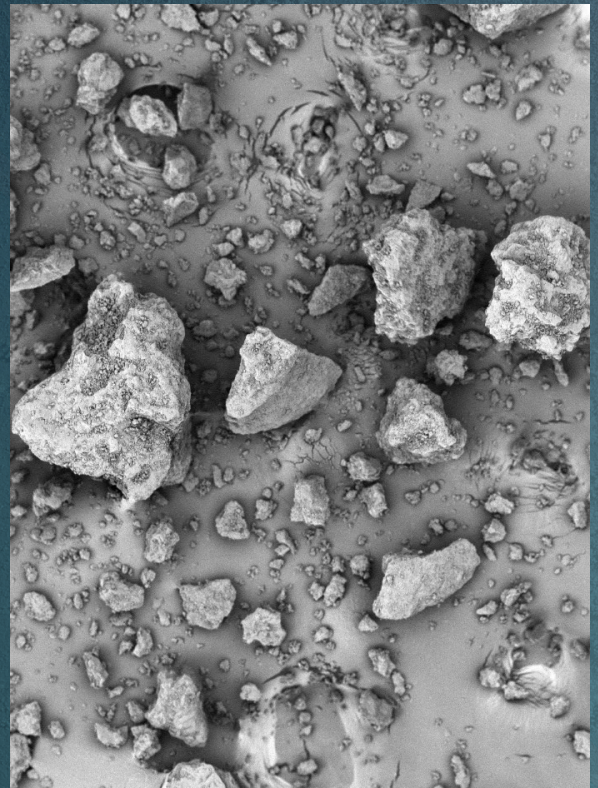
Oral Solid Dose

# SuperTab<sup>®</sup> 23 AN

SuperTab<sup>®</sup> and Lactopress<sup>®</sup> are DFE Pharma's brand names for direct compression lactose. SuperTab<sup>®</sup> 23AN is the newest addition to our anhydrous lactose portfolio.

SuperTab<sup>®</sup> 23AN is manufactured in our state of the art manufacturing facility in Nörten-Hardenberg, Germany where we doubled our capacity in 2019.

With our capabilities we support the market with base and specialty anhydrous products to serve customers globally. Customers can benefit from leading quality and supply ability reducing risks of product constraints or rejections. We do this with a modern, hygienic design. This is peace of mind worth having.

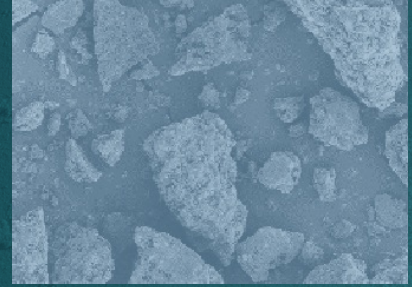


Ask an

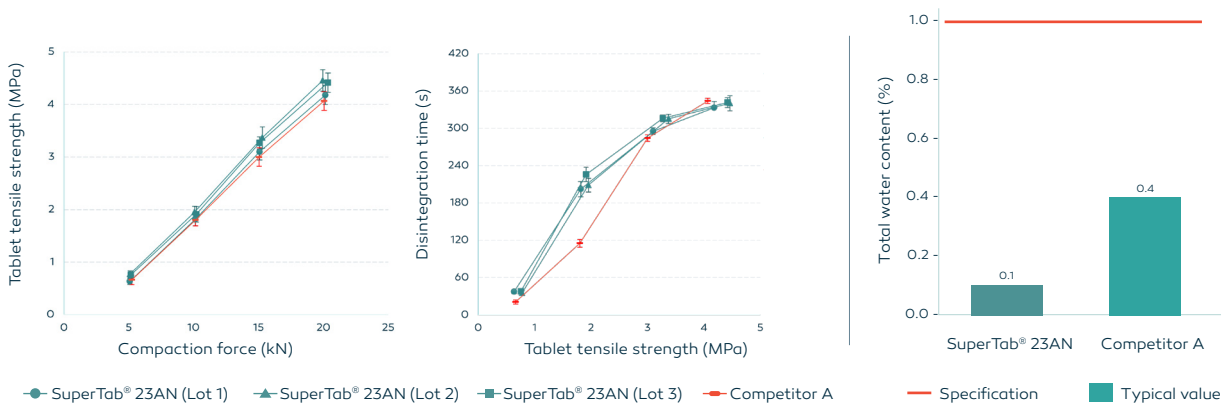


**EXPERT**

# SuperTab® 23AN



SuperTab® 23AN is a compressible and easily flowing lactose grade, ideal for direct compression and dry granulation (slugging and roller compaction). Its specifications and functionality are in line with existing market grades. Distinguishes itself through controlled, low total water level beneficial for formulation stability.



## Data

### Typical product data

USP-NF, Ph.Eur., ChP. JP  
Halal certified.

### Particle size distribution

Method: Rotap sieve

%w/w <75µm	20-30
%w/w 75-106µm	6-20
%w/w 106-150µm	10-25
%w/w 150-180µm	7-15
%w/w 180-250µm	15-30
%w/w >250µm	10-20

Poured density	~0.7 g/ml
Tapped density	~0.9 g/ml
Karl Fischer (total water)	~0.1% w/w

## Packaging

	Drum
Capacity	50 kg (~110lbs)
Shelf life	2 years

Order your sample:

