

Oral Solid Dose

SuperTab[®] 21AN

Controlled, efficient processing



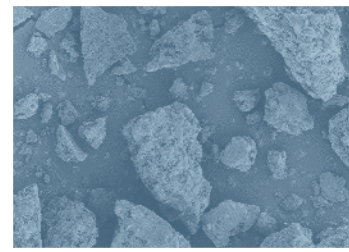
SuperTab[®] and Lactopress[®] are DFE Pharma's brand names for direct compression lactose. **SuperTab[®] 21AN** is a highly consistent, anhydrous lactose. The characteristic structure contains clusters of microcrystals of predominantly anhydrous β -lactose. Due to being an anhydrous lactose it has a low moisture content. This property makes SuperTab[®] 21AN a popular choice in formulating with moisture sensitive API's. The unique, low levels of crystalline water makes the use of SuperTab[®] 21AN with PAT technologies efficient.

ASK AN EXPERT
dfepharma.com/productfinder



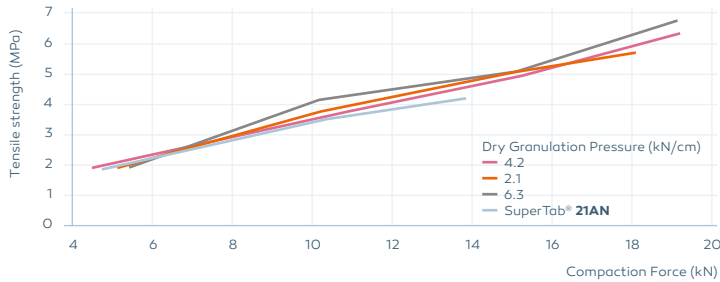
SuperTab® 21AN

Benefits



Allows excellent compaction and re-compaction

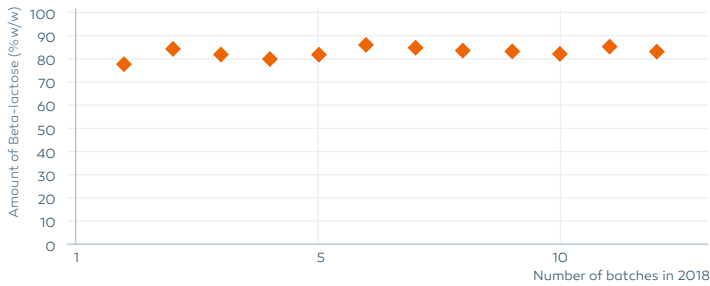
Tablet crushing strength remains high after recompaction. Therefore SuperTab® 21AN is the preferred choice for dry granulation processes.



Suitable for moisture sensitive API

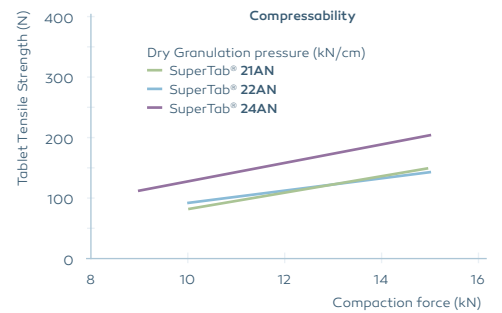
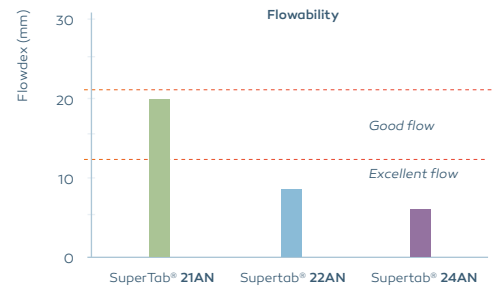
Exceptional low crystalline water amount

The unique, low levels of crystalline water makes the use of SuperTab® 21AN with PAT technologies efficient. Typically SuperTab® 21AN contains about 80% of the β-isomer



Part of a portfolio offering enhanced functionality

DFE Pharma offers more anhydrous grades with different particle sizes and morphology to enable a best fit with your formulation requirements.



Facts

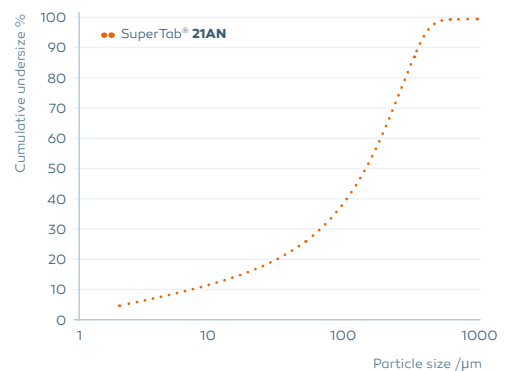
Typical product data

Complies with Ph. Eur., USP-NF, JP
Kosher & Halal certified

Particle size distribution

Method: by Airjet sieve

Sieve %w/w < 45 µm	≤ 20	Poured density	0.72 g/ml
Sieve %w/w < 150 µm	40 - 65	Tapped density	0.91 g/ml
Sieve %w/w < 250 µm	≥ 80	Karl Fischer (moisture)	< 0.5% w/w



Packaging

	Bag	Drum
Capacity	25 kg	50 kg
Shelf life	2 years	2 years

In pursuit of excipient excellence