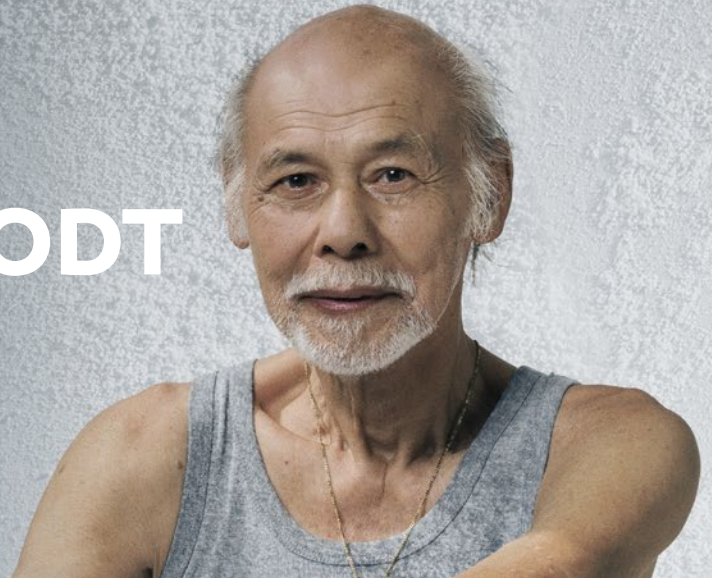


Oral Solid Dose

SuperTab[®] 50 ODT

Reimagine your ODT



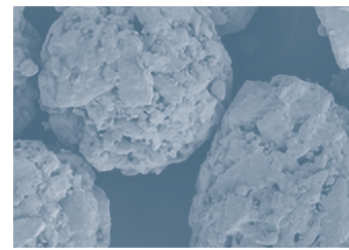
SuperTab[®] 50 ODT is a new product within DFE Pharma's portfolio. It provides a solution for orodispersible formulations, helping to deliver medication to pediatrics and geriatric patients, or to those who suffer from Dysphagia. SuperTab[®] 50 ODT is a highly consistent, monohydrate lactose. Due to the porous nature, fast disintegration time can be established. These attributes of SuperTab[®] 50 ODT, in combination with a superdisintegrant, offer rapid disintegration in the mouth. Therefore SuperTab[®] 50 ODT is found to be the ideal solution for oral disintegrating tablets (ODT) where fast disintegration and good mouth feel is of key importance.

ASK AN EXPERT
dfepharma.com/productfinder



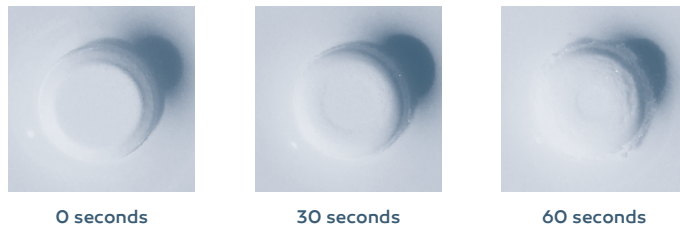
SuperTab® 50 ODT

Benefits



100% natural, soluble material

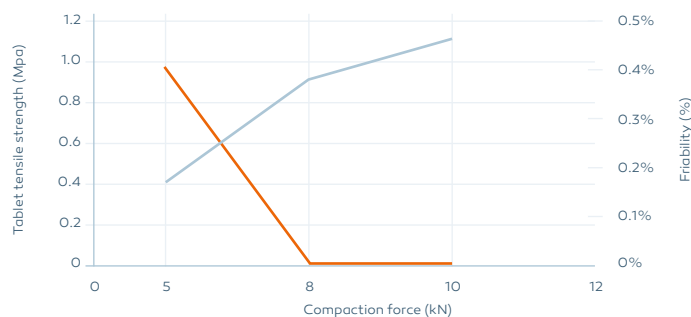
Pharmaceutical lactose is a commonly used excipient in Oral Solid Dosage (OSD) medicines as it is an inert, stable, soluble and palatable product. SuperTab® 50 ODT has a fast disintegration time.



Robust tablet hardness

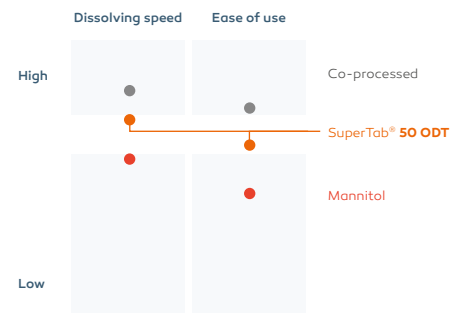
at a given compaction force

Tablets made with SuperTab® 50 ODT have a low friability (< 0.5%w/w) ensuring consistent performance on tablet hardness over time. This combined with a good tensile strength at a given compaction force.



Pleasant mouthfeel

SuperTab® 50 ODT has a mildly sweet taste as it is a disaccharide excipient. Additionally, modification by spray drying offers porosity which enhances a good mouthfeel.



Facts

Typical product data

Complies with Ph. Eur., USP-NF, JP
Kosher & Halal certified

Particle size distribution

Method: by Airjet sieve

- Sieve % w/w <45µm = max 20
- Sieve % w/w < 106µm = 30 - 60
- Sieve % w/w < 250µm = > 90
- Poured Density (g/ml) = 0.64
- Tapped Density (g/ml) = 0.73



Packaging

	Box
Capacity	25 kg
Shelf life	18 month re-test

In pursuit of excipient excellence