

Oral Solid Dose

# SuperTab<sup>®</sup> 40LL

Breaking through direct compression limits



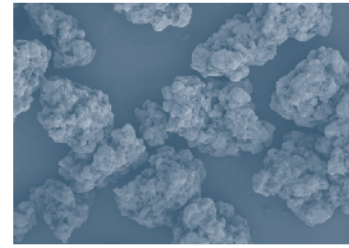
The pharmaceutical industry is continuously looking, together with partners, at better ways to deliver medication to new patient groups. Mini-tablets are a great example as they allow pediatric and geriatric patients improved comfort in taking their medicines. However the economical production of mini-tablets does put a strain on the formulation. **SuperTab<sup>®</sup> 40LL** combines all required functionalities into one single excipient. Consequently, it breaks through the limits of direct compression, making it the excipient of choice for mini-tablet and / or other challenging formulations.

**ASK AN EXPERT**  
[dfepharma.com/productfinder](https://dfepharma.com/productfinder)



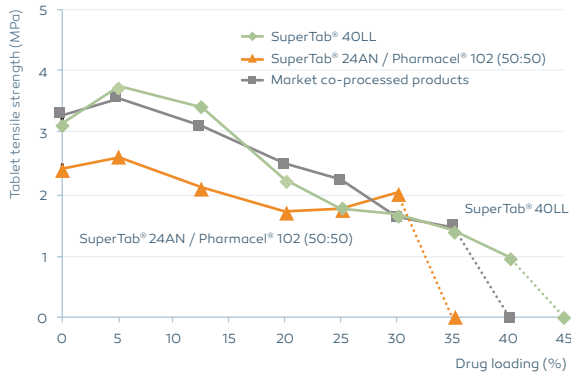
# SuperTab® 40LL

## Benefits



### Better and faster tablet compression

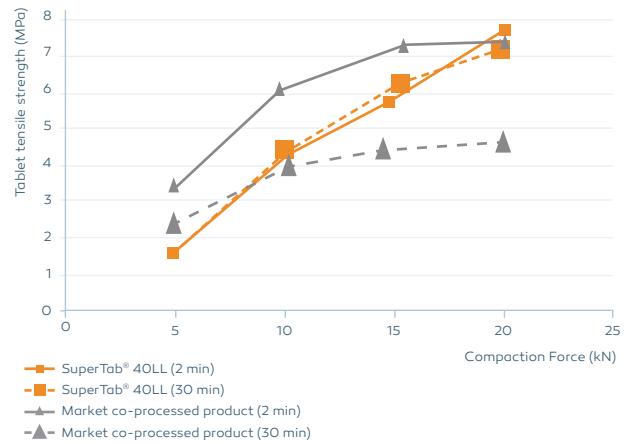
SuperTab® 40LL has the highest carrying capacity of marketed excipient products. Drug loading was increased until flow became limiting on gravimetric feed tableting press\*



\* = model drug used is Paracetamol (x50=38µm). Formulation 94% mentioned excipient; 4% Primellose; 1% Magnesium Stearate; Tablets diameter 3 mm, 20 mg

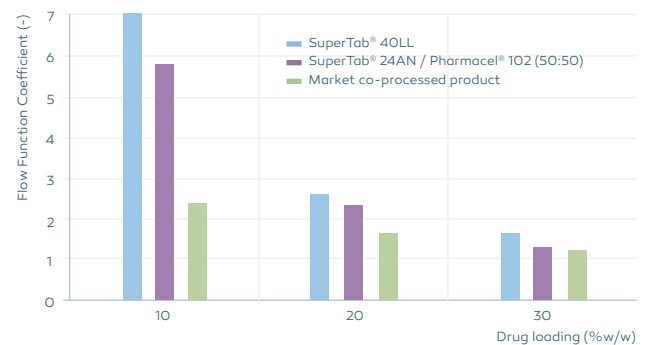
### Extremely low lubricant sensitivity

Uniquely, SuperTab® 40LL exhibits high compactability with extremely low lubricant sensitivity for enhanced formulation during scale-up and to reduce capping tendency whilst still maintaining high drug loads.



### Improve your formulation robustness

SuperTab® 40LL exhibits superior flow, and therefore formulations with higher drug loading can be tableted using gravimetric feed tableting equipment. It enables an even filling of the inherently small die cavities and to allow faster tableting.



## Facts

### Typical product data

Complies with Ph. Eur., USP-NF, JP  
Kosher & Halal certified

#### Particle size distribution

Method: by dry laser diffraction

- x10 40-120 µm
- x50 120-195 µm
- x90 195-530 µm
- Poured Density (g/ml) = 0.53
- Tapped Density (g/ml) = 0.63

### Packaging

	Drum
Capacity	35 kg
Shelf life	24 to 36 months re-test